

Highlights

- ☑ OADM complement to the express CWDM product line
- ☑ Optical drop/pass and drop/insert of single CWDM channel for point-to-point, ring- or bus configuration
- ☑ Compliant to ITU-T G.694.2 CWDM standard
- ☑ Up to 10 Gbit/s per channel
- ☑ Easy integration of new services over existing fiber optic lines
- ☑ Low-cost transceivers applicable, existing equipment can still be used
- ☑ Metro distance, up to 80 km
- ☑ Fully transparent to all data rates and protocols
- ☑ Entirely passive device, no power supply needed

express OADM

More Flexibility over Fiber Optics



The flexible express CWDM/OADM concept provides the ideal solution for the increasing bandwidth demand on enterprise and metro access networks. Also, SANs can benefit from the additional throughput.

Our CWDM/OADM solution is very cost-effective, fully transparent to services and applications and widely scalable.

With our OADM products, we support up to

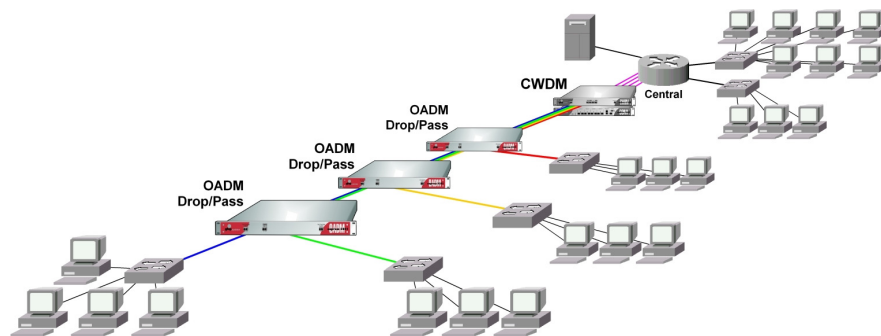
16 connections of different standards, data rates or protocols transmitted over one single CWDM fiber optic line. ESCON, ATM, Fiber Channel, Gigabit-Ethernet are supported simultaneously, without disturbing each other.

Each OADM device can drop/pass or drop and re-insert one single wavelength. This allows very flexible designing of point-to-point, ring, or bus configurations.

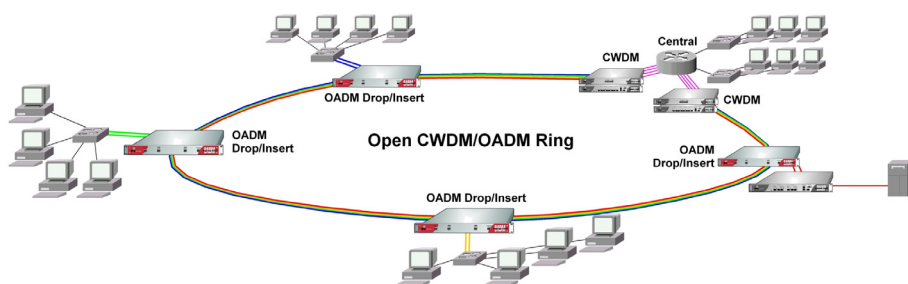
Due to its purely passive technology, the express OADM series is well-prepared for building a fail-safe and maintenance-free backbone architecture.

Application Examples

- All Enterprises and Carriers with Fiber Optic Infrastructure
- Transmit Additional Applications via Existing Lines
- Connect Buildings to CWDM Campus Ring
- Connect Field Offices to Central Office
- Ideal Solution for Metro-Core, Metro-Access and Enterprises



Stations Connected to Central via express CWDM/OADM Equipment



Open Metro CWDM/OADM Ring with Redundantly Connected Stations

express OADM

More Flexibility over Fiber Optics

Specification

2 x CWDM Network Ports for Network West/Network East	Duplex LC Connector Channel Separation 20 nm Supports ITU-G.694.2 Standard
All Drop/Pass/Insert Channels	Duplex LC Connector, max. 10 Gbit/s Channel Separation 20 nm Supports ITU-G.694.2 Standard
Power Supply	Not Needed
Mechanical	19" 1HU, Depth 260 mm
Environmental	Temperature 0-60°C. Humidity max. 90%. Non-condensing

Ordering Information

express OADM 5201
1 x Channel Drop/Pass
1 x Network West
1 x Network East
Order Code: G5201-XXXX-0

express OADM 5202
2 x Channel Drop/Pass
1 x Network West
1 x Network East
Order Code: G5202-XXXX-0

express OADM 5204
4 x Channel Drop/Pass
1 x Network West
1 x Network East
Order Code: G5204-XXXX-0

express OADM 5301
1 x Channel Drop
1 x Channel Insert
1 x Network West
1 x Network East
Order Code: G5301-XXXX-0

express OADM 5302
2 x Channel Drop
2 x Channel Insert
1 x Network West
1 x Network East
Order Code: G5302-XXXX-0

express OADM 5304
4 x Channel Drop
4 x Channel Insert
1 x Network West
1 x Network East
Order Code: G5304-XXXX-0

XXXX = Center wavelength of start channel in nm, more channels follow in 20 nm steps.
Available channel wavelengths are: 1271, 1291, 1311, 1331, 1351, 1371, 1431, 1451, 1471, 1491, 1511, 1531, 1551, 1571, 1591, 1611 nm

Other CWDM/OADM multiplexer types are available on request.